

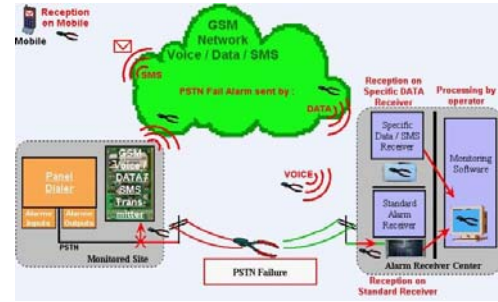
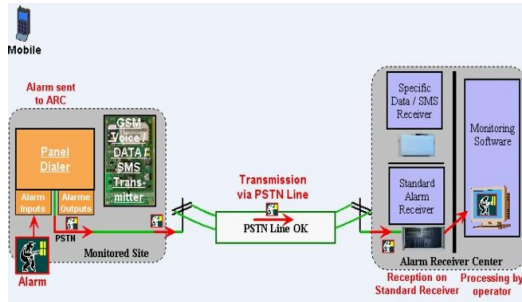
The GSM Alarm Back Up is a universal interface that can be connected to any alarm panel increasing the level of security and redundancy of the reporting of events to a Central Station.

This high performance GSM Backup Device provides an alternate path for the dialer to report alarm signals in case the phone line is faulty or compromised by a deliberate act of sabotage.

The Alarm signal can be sent via the GSM Network. Further alarm messages will automatically be sent via the GSM Network until the PSTN phone line is restored enabling continuous monitoring and communications.

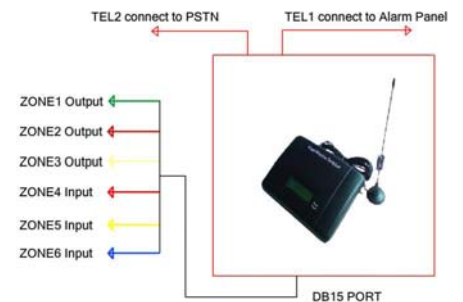
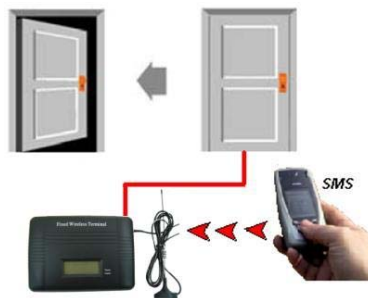
GSM Alarm Back Up may be used with any types of alarm systems, maintaining audible data transferring protocols: CONTACT ID, SIA, ADEMCO etc.

System is Quad-band and can be operable in any GSM Network



Features:

- Use as the telephone line backup in alarm system - Phone lines can easily be cut off during storms, construction work, accidents, or even deliberate tampering by intruders. WT-1010 will check the status of the telecom line in the alarm system and in case the telecom line becomes unavailable, the WT-1010 will transmit the alarm using GSM to the alarm receiving center (ARC) or Center Monitoring Station (CMS)
- Standby recharger battery to prevent power failure or electricity cut off by intruder. The GSM will function as normal when no electricity supply. LCD display to check the GSM signal strength and battery capacity.
- Auto self check and restart function: It can continuously monitor the system status of its own. When there is a problem with the SIM card or the module is not working properly, it will automatically restart the system.
- Automatically call to 8 pre-program phone numbers while alarming. The WT-1010 also will SMS to 8 programmable cell phone numbers to notify the user that the PSTN line has been cut off or unavailable
- In order to prevent professional thieves from trying to disconnect GSM by using "GSM Jammer", WT-1010 will transmit the contact ID using the telecom line if the GSM signal drops immediately and triggers the siren.
- Low power consumption - uses 30mA while in idle state and 260mA when transmitting an alarm
- Auto Test Reporting System - After the programmed reporting time, the WT-1010 will dial the programmable center station number. Once the call is connected, it will transmit the programmable contact-ID to the central station and hang up. This function is to make sure that "GSM alive" daily and able to report to ARC if any emergency.
- Programmable Contact ID - The WT-1010 has built-in alarm inputs that allow the unit to send additional signals (with user programmable Contact-ID event) to the monitoring station. **Supported Protocol. Pager message (DTMF no handshake)**
- Three Remote Controlling Outputs - These open collector outputs (**that can sink max 300ma per output**) can be turned on and off remotely through a SMS. You can use them to pull to ground your inputs. Remote control will be reachable by sending a SMS with a certain command. For example, switch on lighting, air conditional, or switch off generator, sensor using your mobile phone.
- Three Digital Inputs - The system has the function to send alert message to the user in the event of input triggered. For example, Zone 4 connected to an electrical door, when there is an intruder or electrical door is open illegally, WT-1010 will receive a short circuit impulse on Zone 4 and automatically send a signal to the monitoring station and notify the owner. It is possible to enable or disable the function by sending the SMS command to the unit
- Input alarm message can be edited and programmed up to 50 characters long. You can use this function to program any languages. You can change the displayed text by sending a command by SMS to the unit.
- Permanent +V Output Facility - This output is available and grounded on the main board. The output voltage is according to the power supply and it can be used to power other facilities or devices.
- Wall mounting enclosure available: The WT-1010 units can be installed inside the alarm panel or inside its own wall mount enclosure.



In the event if you need further clarification of the above WT-1010C2 GSM For Alarm System, please feel free to contact us. We look forward to contributing to your success.

Witura Corporation Sdn Bhd

101-12-03 & 04, Menara Perdana, Jalan Gurdwara, 10300 Penang, Malaysia.

Tel: +604 228 9053 Fax: +604 228 9146

Email: sales@witura.com

[Http://www.witura.com](http://www.witura.com)