

Introducing our most popular safety & security device,

providing the best viewing effect, it is engineered to withstand extreme outdoor weather condition. It is the ideal solution for areas with high risk of vandalism, pilferage or aggressive industrial chemical atmosphere given its outstanding weather and impact resistance.

No More Blind Corner!

That's why Stainless Steel Convex Mirror.



Ever-Grow Stainless Steel Convex Mirror

can be easily installed at road intersection and parking lot where there is a severe risk of accidental breakage. Stainless Steel Mirror is virtually unbreakable and requires minimal maintenance, therefore, it produces cost effective result in the long run when compared to other materials that may require regular maintenance or replacement. It has indeed rapidly replacing mirror of other materials for both indoor and outdoor application for the above reasons.

Standard Product



Stainless Steel Mirror 1000mm
SUS 430, GI plate



Where Use?

- Road Safety**
- Hilly/Winding Road
 - Back Lane Exits of Downtown
 - Intersection
 - Carpark Entrance & Exits

Governmental

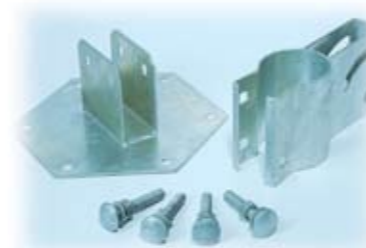
- Schools
- Hospitals
- Prisons
- Police Station
- Fire Station

Factory

- Petrol-Chemical Plant
- Steel Mill
- Off Shore Oil Rigs
- Services Roads of Factory
- Other Heavy Industry Plants

Public / Private Places

- Airport
- Railway Stations
- Bus Stations
- Sea Ports
- Warehouses
- Container Terminals



1000mm Bracket

Why Stainless Steel

Material	Weather Resistant	Impact Resistant	Reflectiveness	Stainless Steel Over Others
Stainless Steel	★★★★★	★★★★★	★★★	The reflectiveness of Stainless Steel increase over time
Acrylic	★★★	★★	★★★★	
Polycarbonate	★★	★★★★	★★★★	
Glass	★★	★	★★★★★	

Remark: ★★★★★ Best ★★★★★ Good ★★★★★ Normal ★★ Poor ★ Very Poor
Source: PIARC Committee on Road Safety, Japan's Traffic Mirror Guide

Shipping Information

Size (mm)	Carton Size (mm)	Gross Weight (kg)	Quantity Carton (pc)	Container Capacity (pcs)	
				20'	40'
320	784 x 379 x 380	19	10	2520	5400
490	585 x 421 x 591	21	6	1200	2400
600	725 x 725 x 125	11	1	432	864
800	900 x 900 x 125	15	1	252	546
1000	1100 x 1100 x 125	21	1	180	376
450 x 600	690 x 625 x 133	9	1	456	969
600 x 800	885 x 785 x 133	13	1	260	546



Light Duty Bracket



320mm & 490mm Bracket



450mm x 600mm
600mm x 800mm
600mm & 800mm Bracket



Light Duty Bracket

Standard Product

Item	Material	Remarks
Mirror Lens	SUS 304	High Quality Stainless Steel
Mirror Back	SUS 430, GI Plate	High Quality Stainless Steel
Rubber Shade	UV Resistance (PC Material)	Unbreakable
Protective Ring	UV Resistance (PVC Material)	Unbreakable
Brackets	m.s.plate (Hot Dipped) or Aluminium	Heavy Duty