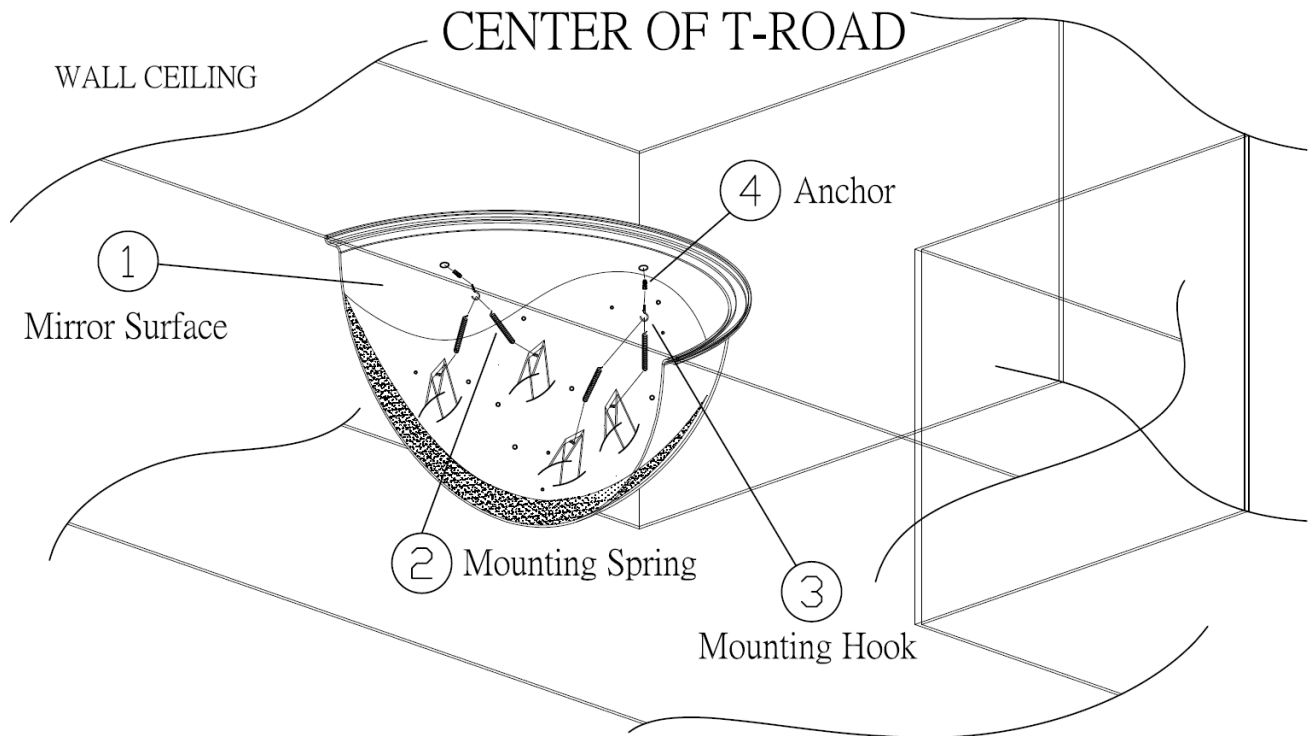


### ***HALF DOME MIRROR (ADH-45 AND ADH-66)***

- WALL MOUNT
- ACRYLIC MIRROR PROVIDES EXTRA CLEAR IMAGES
- 180° ANGLE FOR LEFT & RIGHT VIEWING
- SOLID & LIGHT MIRROR FOR EASY INSTALLATION
- SUITABLE FOR CONVENIENT STORE, WAREHOUSE, HOSPITAL T-INTERSECTION USE



**ITEM NO :** ADH-45 (18 inches) / ADH-66 (26 inches)  
**DESCRIPTION :** 180° DOME MIRROR (Half)  
**MIRROR SIZE :** 450mm (18 inches) / 660mm (26 inches)  
**CONVEX RADIUS :** 180°  
**MIRROR MATERIAL :** R225  
**BACKBOARD MATERIAL :** ACRYLIC  
**WEIGHT :** 0.7 kg / 1.7 kg



P.N.	DESCRIPTION	SPECIFICATIONS	UNIT	Q'TY	REMARK
1	Mirror Surface	Acrylic	Piece	1	half-sphere mirror with clear & waveless surface
2	Mounting Spring	M10	Set	4	(1) Mirror Surface & (3) Mounting Screw assembly use
3	Mounting Screw	Galvanized steel	Set	4	
4	Anchor	Plastic 1/4" x 1"L	Set	4	(3) Mounting Screw & solid surface mounting use