

# SF400

## IP Based Fingerprint Access Control & Time Attendance



SF400 is an IP based fingerprint terminal with both Network and Standalone operation modes. It is connectible with ZKAccess 3.5 software for access control and time attendance management.

With Wiegand output, SF400 is flexible to connect with ZK or any 3rd party controllers as a slave reader. Wiegand input configures two SF400 units to utilize Master & Slave solution to enable users verification at both entrance and exit. Anti-passback function is also enabled to maximize the security level.

Auxiliary input interface allows SF400 to connect with an extra source, for instance, a smoke detector or emergency switch. Once the linkage function is enabled through the machine menu, the device generates an alarm signal and opens doors in case of emergency.

---

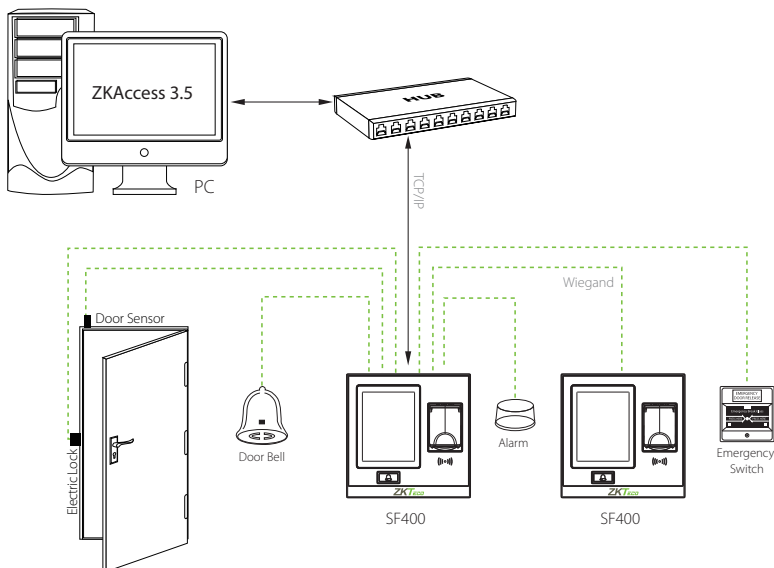
### Feature

- 2.8-inch touch screen, color display with graphical UI for easy operation
- Up to 24 user-defined schedules that can be activated on a daily bell alert (optional)
- Prompt audio acceptance or rejection signals for valid or invalid fingers
- Compact and lightweight, small size for 86mm (L) x 86mm (H) socket installation
- TCP/IP or RS485 communication for various networking environments
- Supports USB flash drive for offline data management
- Built-in auxiliary input with enhanced flexibility to link with wired detector or emergency switch
- Up to 15 multi-verification methods to enhance security level
- Standard access control features such as Time zone, Holiday, A&C Group, Unlock combination etc.
- Duress Alarm offers effective protection against duress by threats
- Tamper proof switch and multiple alarm outputs
- Multi-languages display available on request

# Specifications

Model	SF400
LCD	2.8 inch resistive touch screen
Fingerprint Sensor	ZK Optical Sensor (500DPI)
Algorithm Version	ZKFinger VX10.0
Communication	TCP/IP, USB Host
Fingerprint Capacity	1,500
Card Capacity (Optional)	5,000 (EM/Mifare)
Records Capacity	80,000
Access Control Interface	Electric lock, Door sensor, Alarm, Exit button, Door Bell
Wiegand Signal	Wiegand input & output
Aux. Input	1ea for linkage function
Power Supply	DC 12V/3A
Operating Temperature	0 ~ 45°C (32°~113°F)
Operating Humidity	20 ~ 80%
Dimension(L x W x H)	105 x 105 x 32mm

## Configuration



## Dimensions (mm)

