

Customized Mobile Solar Panel Solution (2x 100W)



Mobile Solar Panel Set:



Controller + Surge protector + Breaker



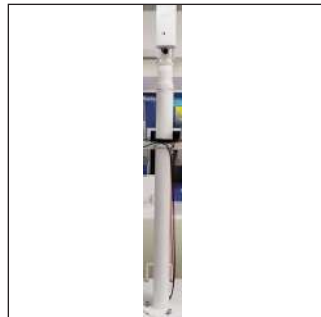
Mobile Cabinets



2x 100W Solar Panel



150 Ah Battery



Extendable Pole

* Model may vary due to batch differences, contact us for more information.

Solar Panel Model (CM100M) Specifications

Maximum Power (W)	100W
Optimum Power Voltage (Vmp)	19.5
Optimum Operating Current (Imp)	5.13
Open Circuit Voltage (Voc)	22.7
Short Circuit Current (Isc)	5.65
Cell Efficiency (%)	22%
Module Efficiency (%)	>17.6%
Tolerance Wattage(e.g.+/-3%)	±3%
NOCT	47°C +/-2°C

Specifications

Model	COPD6860
Power	Solar Power
Input Voltage	DC18/36V
Output Voltage	DC12/24V
Heat Dissipation	Air cooling or Natural cooling
Surge Protection	DC24,MAX 20KA
Power Distribution mode	Customizable
Dimensions	850 x 680 x 30mm
Solar Panel Quantity	2 PCS
Solar Panel Power	100W
Battery Capacity	150 AH
Lifting Height	3 Meters
Interface Port	RS485 (Optional)
DTU	Optional
AC 220 V inverter	Optional
Mains Charger	Optional
Working Temperature	-40°C to +85°C
Installation	Floor Stand
Operating/Storage Conditions	20 - 90% (No condensation, maximum)

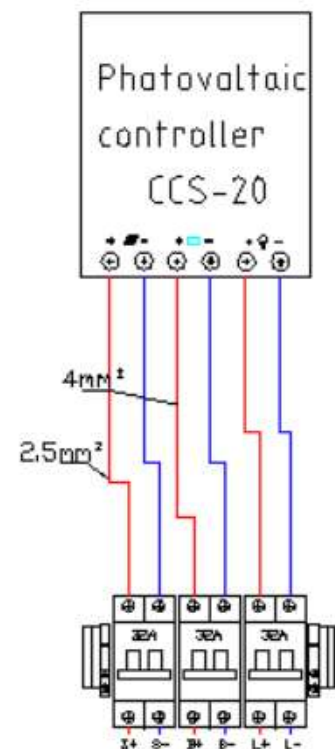
Calculation Table (Sample)

Package	Power Consumption	Back up hrs
2MP Fix lens Camera + AP (12V DC)	14W	60 Hrs
2MP Fix Camera + 4G Router (12V DC)	14W	60 Hrs
2MP PTZ (42xx) + AP (12V DC)	40W	28 Hrs
2MP PTZ (42xx) + 4G Router (12V DC)	40W	28 Hrs

Remark: If device is 24V AC, inverter can be added

Schematic Diagram

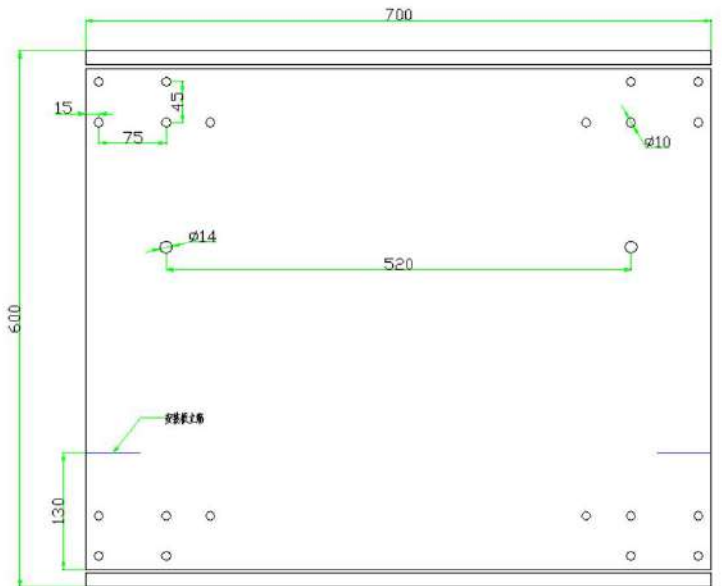
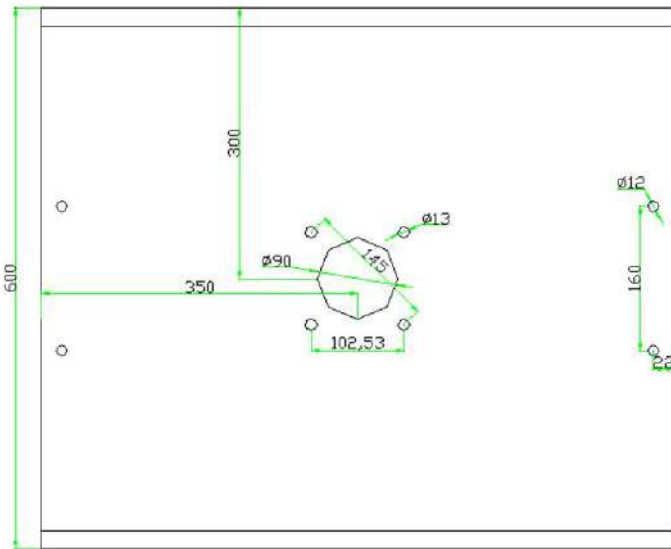
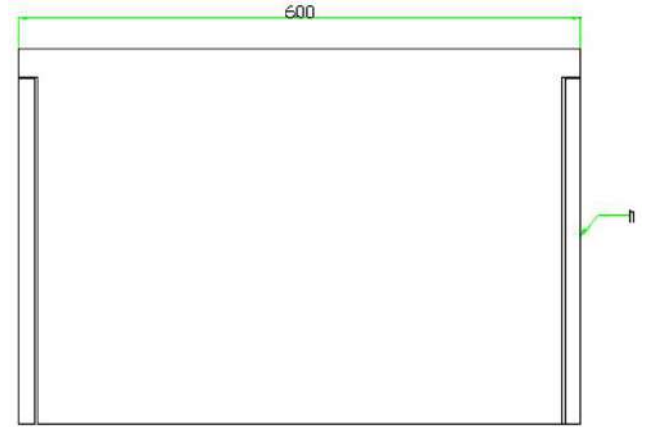
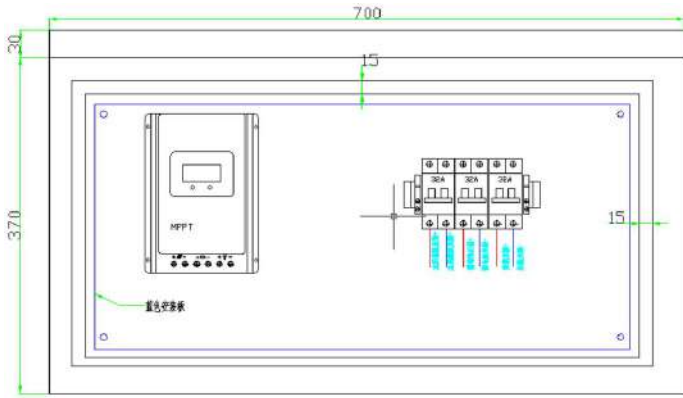
Accessories			
NO	NAME	MODEL	QUANTITY
1	Controller	CCS-20	1
2	Breaker	32A-2P	3
3	Terminal plug	UK	2
4	U Bracket	UK	1



Technical requirements:

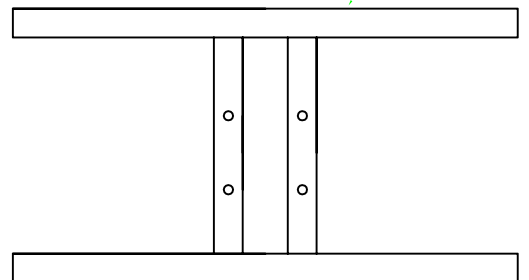
1. GND connection.
2. Sequence of power, connect backup battery first then only connect panel wiring

Schematic Diagram



Technical Requirements:

1. The box is made of 1.5mm201 stainless steel
2. The installation board adopts 1.2mm galvanized sheet
3. 1 triangle lock



Dimensions

